

Philadelphia Donut Stud Philadelphia Donut Stud Philadelphia Donut Stud

Latitude 40.010507

Longitude -75.209471

Donut: 0-1.0 mile

Donut: 1.0-3.0 mile

Donut: 3.0-5.0 mile

2000 - 2008 Population Annual Rate

-0.15%

-0.56%

-0.38%

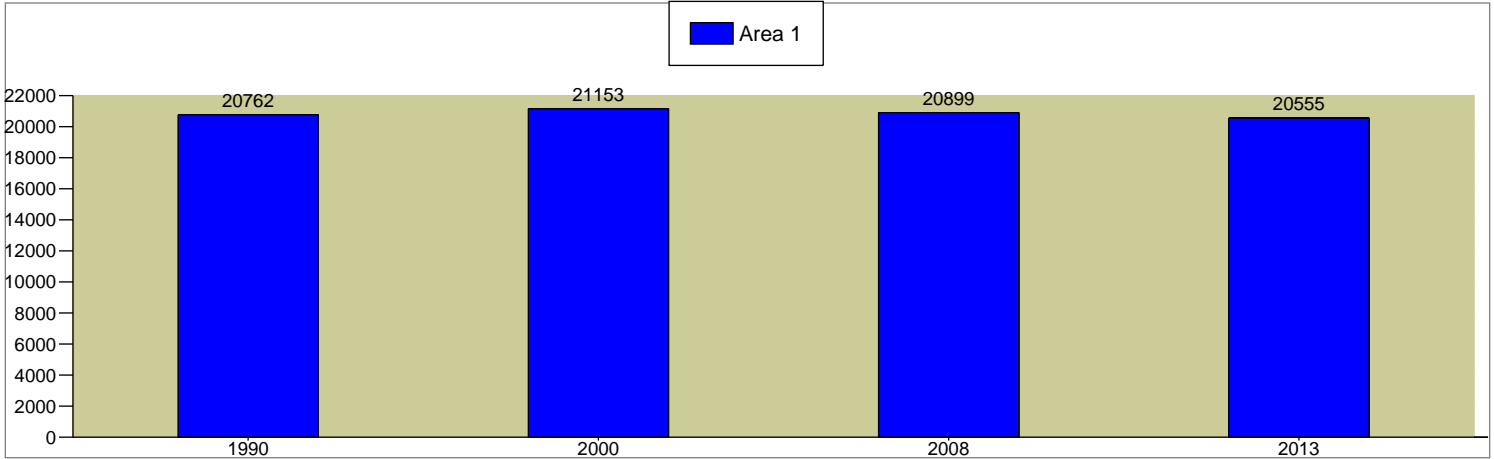
2008 - 2013 Population Annual Rate

-0.33%

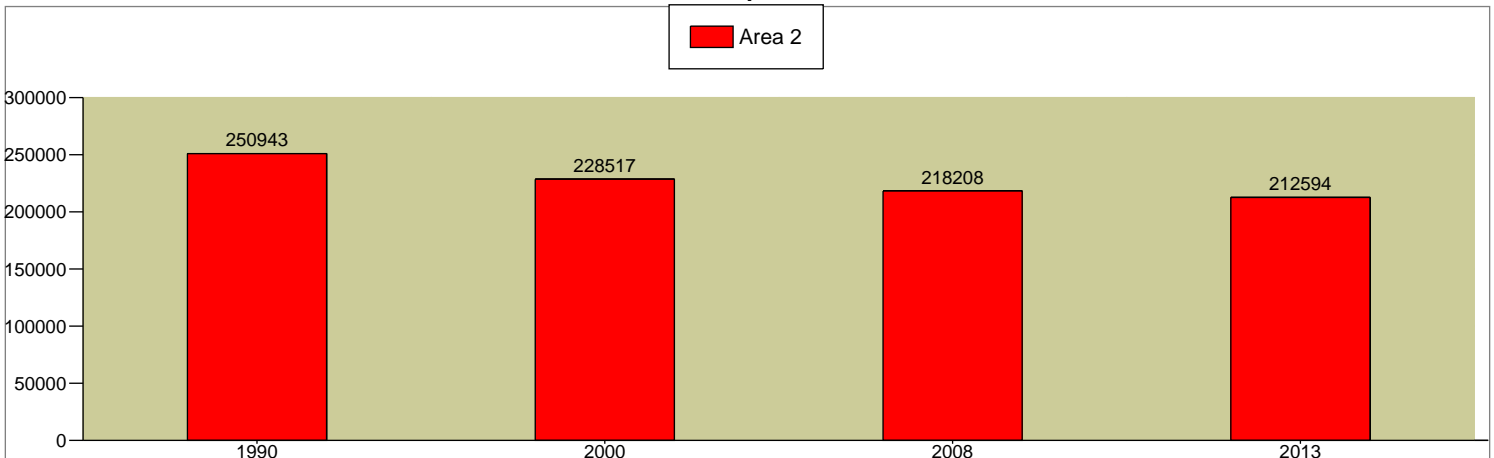
-0.52%

-0.47%

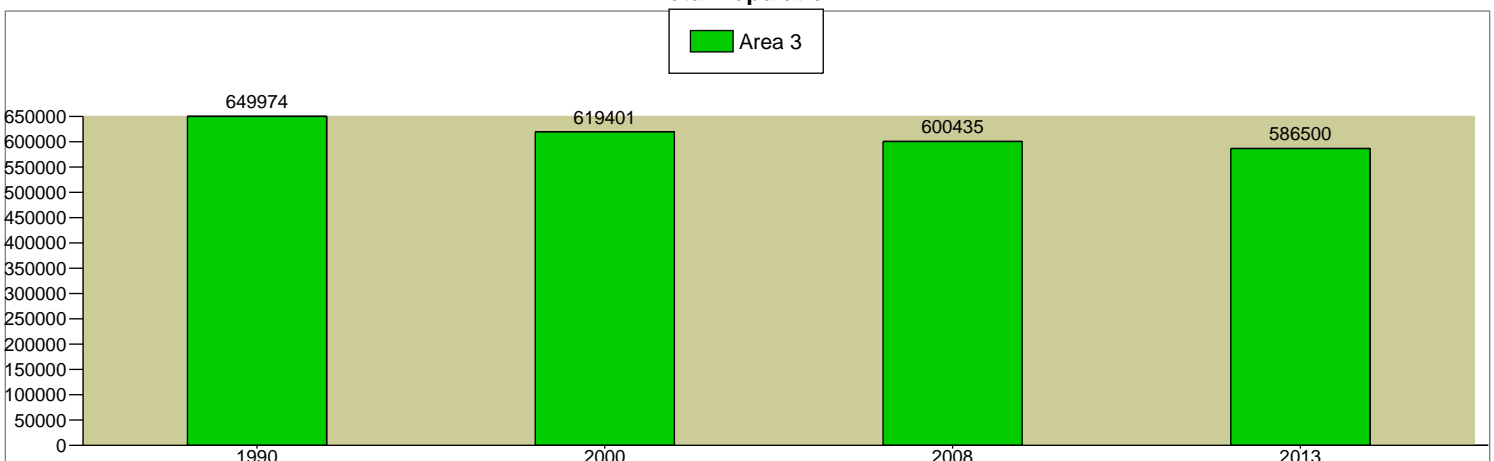
Total Population



Total Population



Total Population



Source: U.S. Bureau of the Census, 2000 Census of Population and Housing. ESRI converted 1990 Census data into 2000 geography. ESRI forecasts for 2008 and 2013.



Latitude 40.010507
 Longitude -75.209471

Philadelphia Donut Stud Philadelphia Donut Stud Philadelphia Donut Stud
 Donut: 0-1.0 mile Donut: 1.0-3.0 mile Donut: 3.0-5.0 mile

2000 Population by Age

	Donut: 0-1.0 mile	Donut: 1.0-3.0 mile	Donut: 3.0-5.0 mile
Total	21,151	228,515	619,401
0 - 4	3.6%	6.5%	6.6%
5 - 9	3.5%	7.7%	7.6%
10 - 14	3.4%	7.8%	7.8%
15 - 19	6.2%	7.2%	8.4%
20 - 24	11.8%	7.0%	8.9%
25 - 34	21.0%	13.3%	14.7%
35 - 44	11.7%	14.7%	14.1%
45 - 54	10.1%	12.9%	11.9%
55 - 64	7.2%	8.7%	7.9%
65 - 74	7.6%	7.5%	6.3%
75 - 84	7.9%	5.1%	4.2%
85+	6.0%	1.7%	1.6%

2008 Population by Age

	Donut: 0-1.0 mile	Donut: 1.0-3.0 mile	Donut: 3.0-5.0 mile
Total	20,900	218,211	600,433
0 - 4	3.6%	6.5%	6.7%
5 - 9	3.2%	6.5%	6.4%
10 - 14	3.5%	7.1%	6.9%
15 - 19	6.7%	7.8%	9.0%
20 - 24	10.9%	7.4%	9.5%
25 - 34	18.5%	12.6%	13.8%
35 - 44	12.5%	13.0%	12.8%
45 - 54	11.2%	14.0%	13.1%
55 - 64	8.7%	10.9%	9.8%
65 - 74	6.8%	6.8%	6.0%
75 - 84	7.4%	5.0%	4.1%
85+	7.0%	2.2%	2.0%

2013 Population by Age

	Donut: 0-1.0 mile	Donut: 1.0-3.0 mile	Donut: 3.0-5.0 mile
Total	20,552	212,595	586,499
0 - 4	3.7%	6.6%	6.7%
5 - 9	3.1%	6.4%	6.5%
10 - 14	3.3%	6.4%	6.2%
15 - 19	6.6%	7.1%	8.3%
20 - 24	11.5%	8.0%	10.1%
25 - 34	16.9%	12.6%	13.6%
35 - 44	12.0%	12.0%	11.6%
45 - 54	11.7%	13.6%	12.9%
55 - 64	9.6%	12.6%	11.4%
65 - 74	7.2%	7.3%	6.5%
75 - 84	7.1%	4.8%	3.9%
85+	7.4%	2.5%	2.2%

Median Age

	Donut: 0-1.0 mile	Donut: 1.0-3.0 mile	Donut: 3.0-5.0 mile
2000	35.5	35.4	32.2
2008	37.7	36.5	33.2
2013	39.3	37.5	33.8

Source: U.S. Bureau of the Census, 2000 Census of Population and Housing. ESRI forecasts for 2008 and 2013.

Philadelphia Donut Stud Philadelphia Donut Stud Philadelphia Donut Stud

Latitude 40.010507

Longitude -75.209471

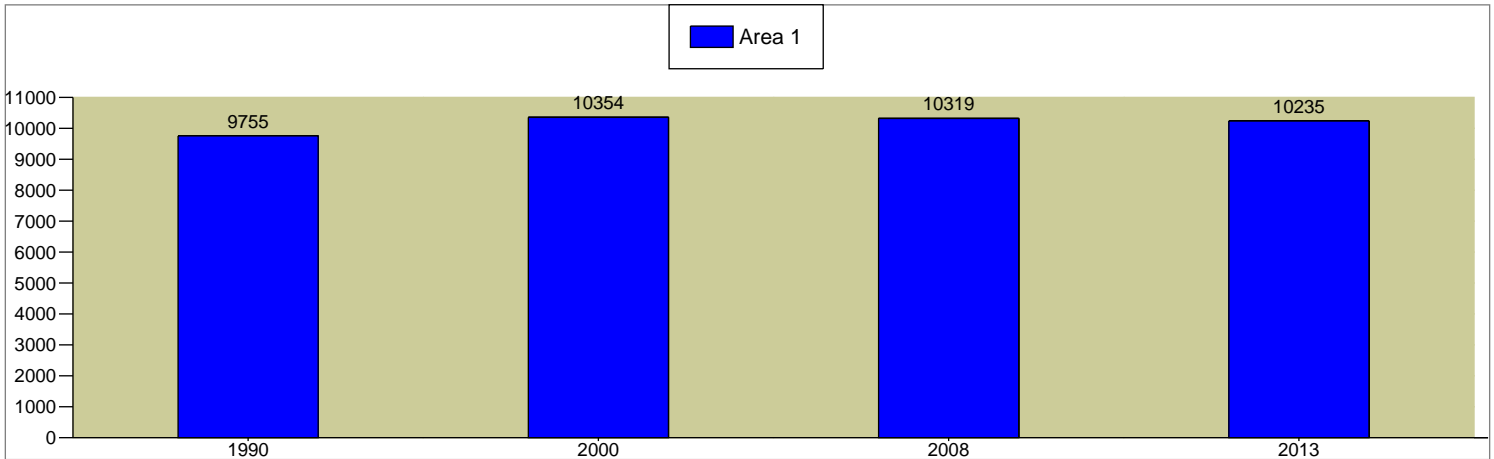
Donut: 0-1.0 mile

Donut: 1.0-3.0 mile

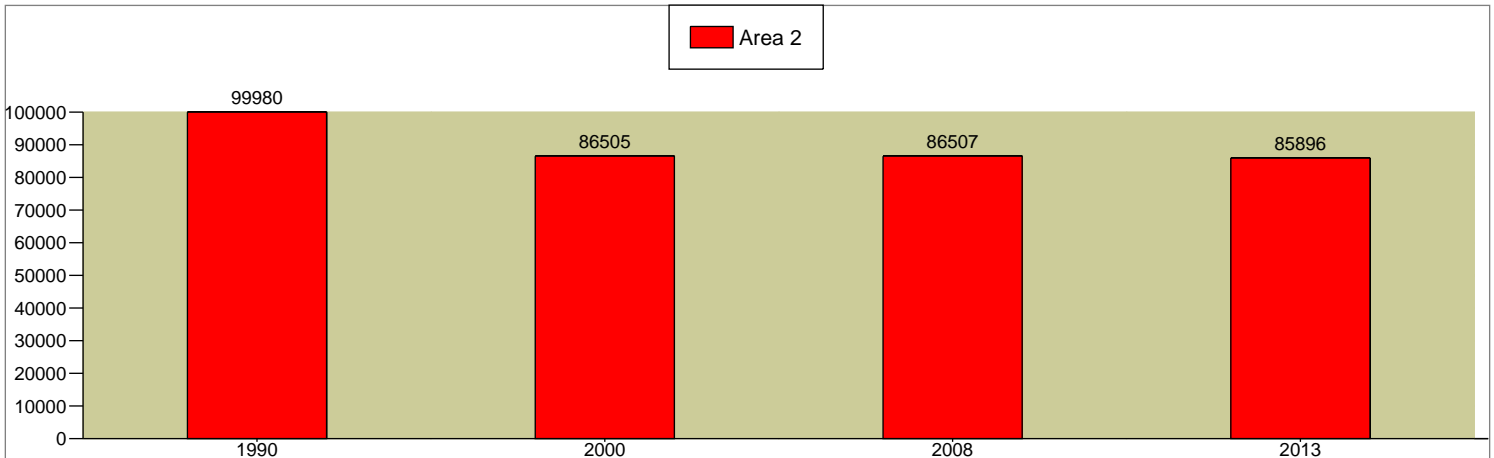
Donut: 3.0-5.0 mile

2000 - 2008 Civilian Employed Population 16+ Annual Rate	-0.04%	0%	0.21%
2008 - 2013 Civilian Employed Population 16+ Annual Rate	-0.16%	-0.14%	-0.15%

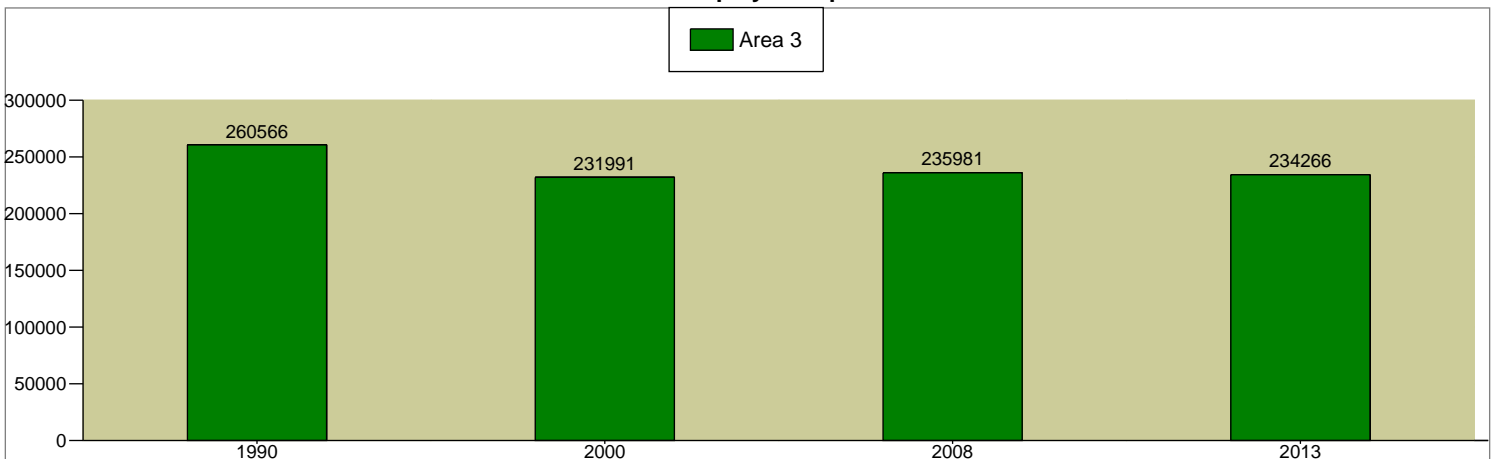
Total Civilian Employed Population 16+



Total Civilian Employed Population 16+



Total Civilian Employed Population 16+



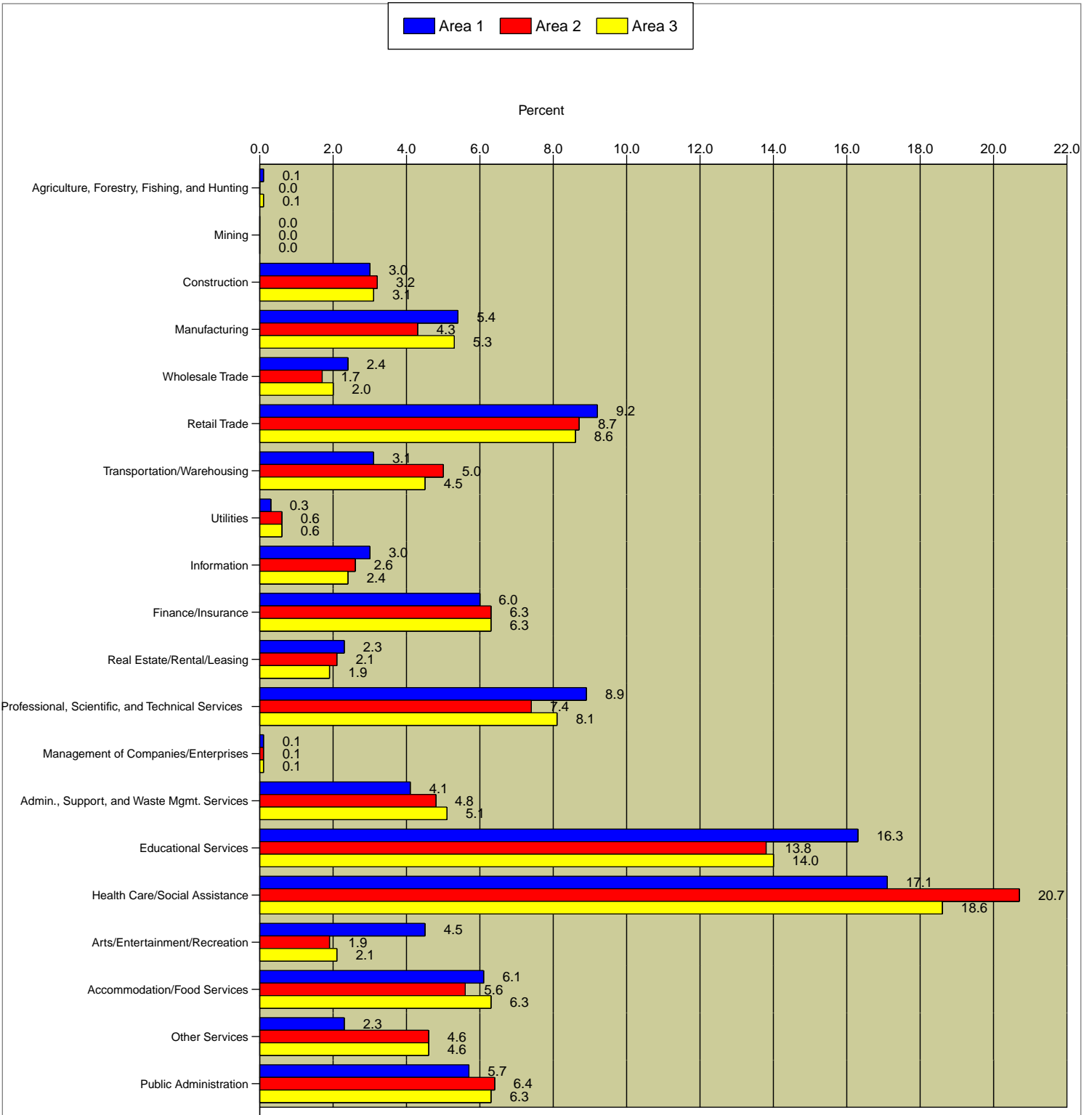
Source: U.S. Bureau of the Census, 2000 Census of Population and Housing. ESRI converted 1990 Census data into 2000 geography. ESRI forecasts for 2008 and 2013.

Latitude 40.010507
 Longitude -75.209471

Philadelphia Donut Stud Philadelphia Donut Stud Philadelphia Donut Stud

Donut: 0-1.0 mile Donut: 1.0-3.0 mile Donut: 3.0-5.0 mile

2008 Employed Civilian Population 16+ by Industry



Data Note: Industry descriptions based on 2000 Census of Population and Housing definitions.

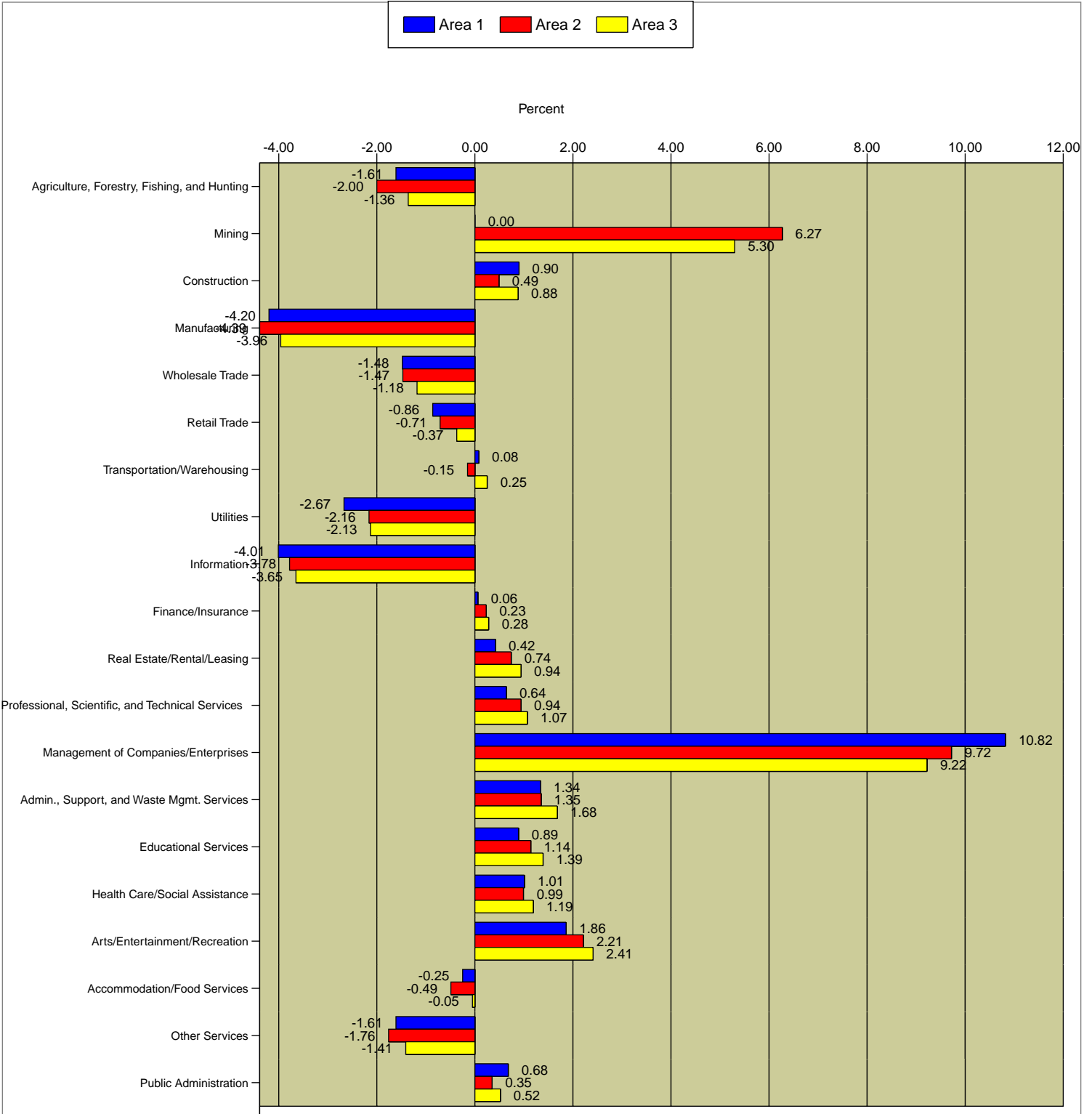
Source: ESRI forecasts for 2008.

Philadelphia Donut Stud Philadelphia Donut Stud Philadelphia Donut Stud

Latitude 40.010507
Longitude -75.209471

Donut: 0-1.0 mile Donut: 1.0-3.0 mile Donut: 3.0-5.0 mile

2000 - 2008 Population by Industry Annual Rate



Data Note: Industry descriptions based on 2000 Census of Population and Housing definitions.

Source: ESRI forecasts for 2008.

Philadelphia Donut Stud Philadelphia Donut Stud Philadelphia Donut Stud

Latitude 40.010507

Longitude -75.209471

Donut: 0-1.0 mile

Donut: 1.0-3.0 mile

Donut: 3.0-5.0 mile

2000 - 2008 Households Annual Rate

-0.14%

-0.43%

-0.27%

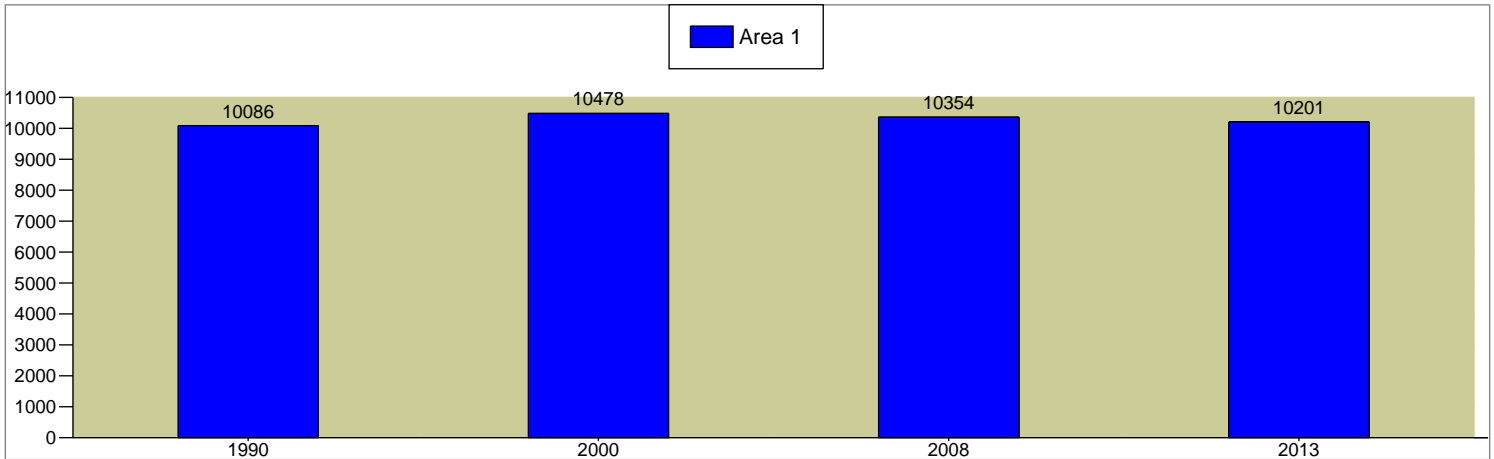
2008 - 2013 Households Annual Rate

-0.3%

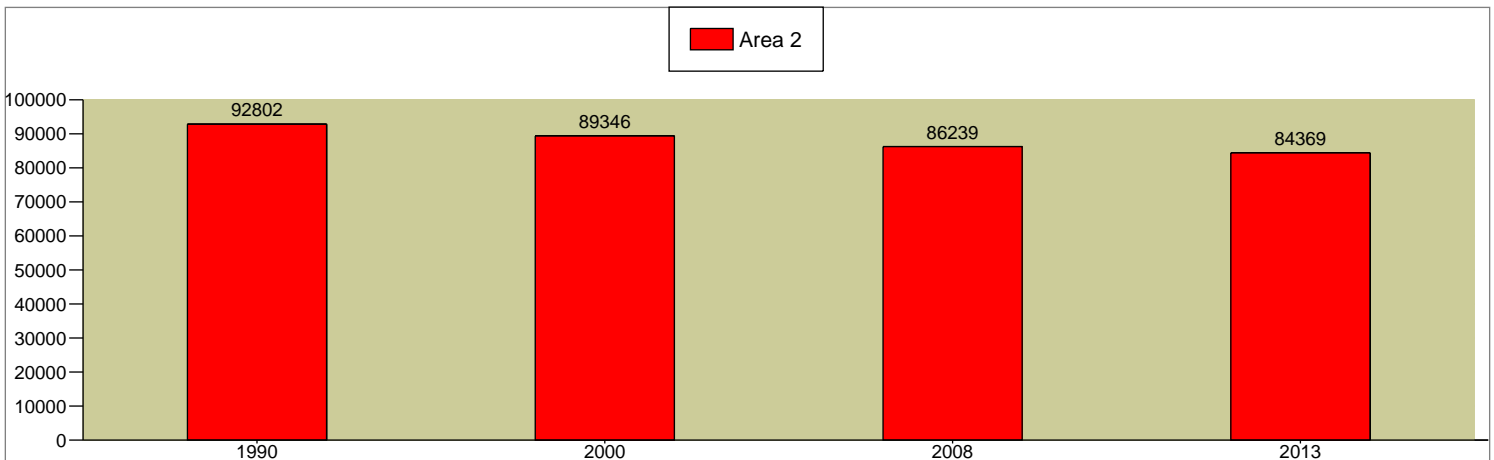
-0.44%

-0.41%

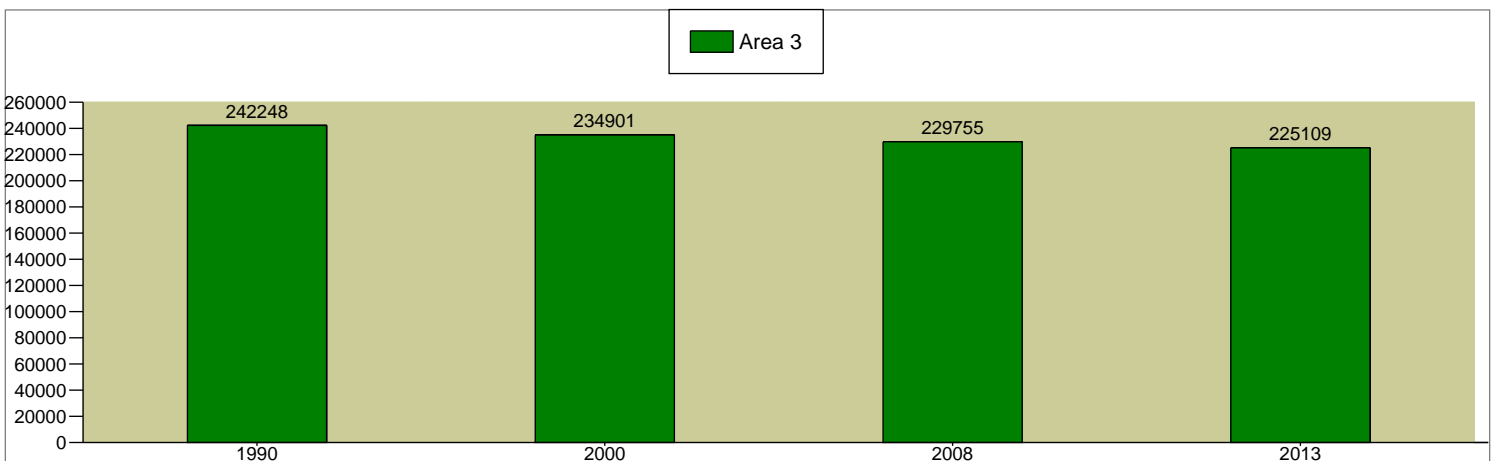
Total Households



Total Households



Total Households



Source: U.S. Bureau of the Census, 2000 Census of Population and Housing. ESRI converted 1990 Census data into 2000 geography. ESRI forecasts for 2008 and 2013.

Philadelphia Donut Stud Philadelphia Donut Stud Philadelphia Donut Stud

Latitude 40.010507

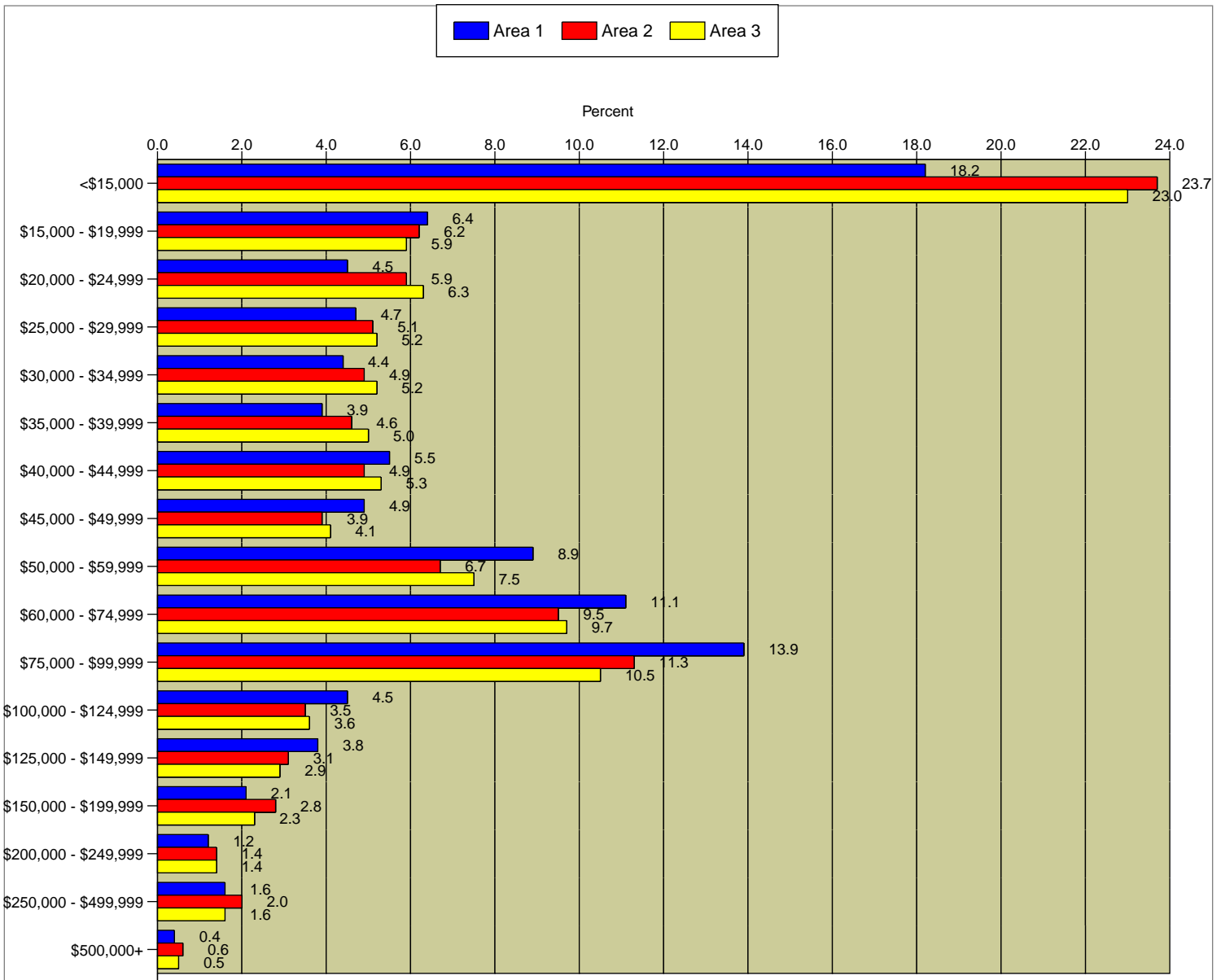
Longitude -75.209471

Donut: 0-1.0 mile

Donut: 1.0-3.0 mile

Donut: 3.0-5.0 mile

2008 Household Income



Median Household Income

2000	\$35,749	\$29,553	\$29,887
2008	\$47,284	\$39,608	\$39,247
2013	\$56,671	\$46,789	\$46,266
2000 - 2008 Median Household Income Annual Rate	3.45%	3.61%	3.36%
2008 - 2013 Median Household Income Annual Rate	3.69%	3.39%	3.35%
2008 Median Net Worth	\$39,339	\$35,859	\$30,684

Data Note: Detail may not sum to totals due to rounding. Income represents annual income for the preceding year. Income for 2008 and 2013 is expressed in current dollars, including an adjustment for inflation.

Source: U.S. Bureau of the Census, 2000 Census of Population and Housing. ESRI forecasts for 2008 and 2013.